



RAYYAN GEO TECH

SURVEYING SOLUTION

GIRIDIH - JHARKHAND



Empanelled Agency

**Dept. Of Mines & Geology
Govt. Of Jharkhand**

Company Profile



**We believe in
delivering quality.**

www.rgtsurvey.org



Introduction

We create inspiring survey solution which maximize the return on investment for our valuable clients.





About Us

Rayyan Geo Tech – Land Survey Solution is a forward thinking, energetic and professional surveying company.

We add value by creating ideal outcomes for our clients, where they endorse the outcome of our analysis to achieve maximize financial returns achieved.

Delivering exact true nature of ground situation on 2D & 3D format. Our team is dedicated to understanding our client's business objectives so that they can create analysis report on our deliverables.

RGT is aligned with all project stakeholders through open communication to ensure we add value and exceed our client's expectation.

We are a growing company with proven track record in delivering successful projects where all stake holders would like to work together again. Our collaborative approach and commitment to understanding our client's objective has ensured our new clients become repeat clients.

Our Mission

With the skill of talented people, we are able to provide customers with superb value, high quality, relevant technology, superior service and support. It is our passion and dedication to what we do that enable us to become a better company for ourselves and the world.

Our mission at RGT is to offer innovative and exceptional analytical process and methodologies that help industries and organisations of all size to achieve predictable, improved quality level, turnaround time and cost associated with survey integrity requirements.

Our Vision

Our vision serves as the framework for our roadmap and guides every aspect of our business by describing what we need to accomplish in order to continue achieving sustainable quality growth.

Client satisfaction is our foremost vision providing portfolio of services in the industry. We are a believer to be recognized as a great place to work and grow professionally.

Our Founder

Founded by M. M. Alam
Rayyan Geo Tech is primarily
engaged in surveying services.

We started with 2 employees
Strength of which had grown
To 17 employees now.

The early customers of firm
Included government departments
like Indian statistical Institute.

Forest department, building
division, PWD. In addition we have
also services various private
organizations.

Under our experienced team,
which acquired skill from national
& international projects the firm
has grown The business and the
customer base expanded to
include private companies as well
as public companies.


We believe in delivering the
success in the field of surveying
through our constant efforts and
commitment to quality service

M.M. ALAM DIRECTOR

Has done Diploma in Civil and started his career
In 2005 as a Land surveyor in V.D Surveyor,
Sigma RD consultancy & Saudi Oger Ltd (KSA)
until year 2012 and was involved in

Numerous prestigious projects that included
Jabal Omar Development Project, Makkah
(Project Cost \$3.2 Billion), Saudi Arabia
National Guard Housing Project which included
6000 pre-cast villas in around 50 Sq Km In
Riyadh – KSA.

He started the firm Rayyan Geo Tech in year
2012 to offer services in the field of survey &
GIS.

A surveying instrument, likely a total station or GNSS receiver, is mounted on a yellow tripod. The tripod is set up on a concrete curb with pink spray-painted markings. The background shows a grassy area, a body of water, and trees under an overcast sky. A semi-transparent black triangle is overlaid on the left side of the image, containing the text.

What We Do

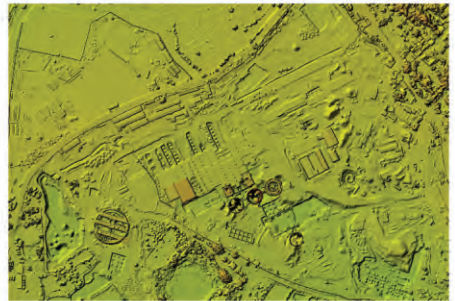
- Traversing
- Topographical Surveying
- Alignment Survey
- Road Survey
- Cadestral Survey
- Setting Out work
- Forest Clearance
- Earthwork Volumetric Calculations
- Land Acquisition
- Geo-Referencing
- G.I.S.



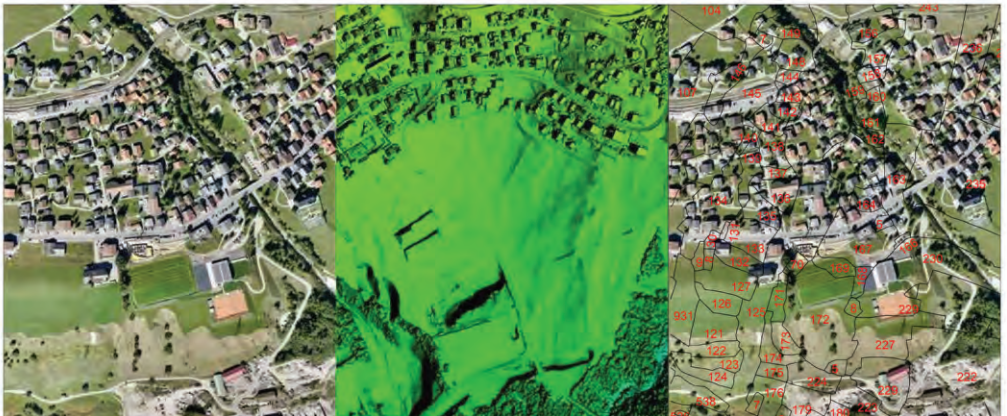
Our Services

Drone (U.A.V.) Survey

A drone survey refers to the use of a drone, or unmanned aerial vehicle (UAV), to capture aerial data with downward-facing sensors, such as RGB or multispectral cameras payloads. During a drone survey with an RGB camera, the ground is photographed several times from different angles, and each image is tagged with coordinates. (GCPs are spread all over project area).



Surveying with a drone offers enormous potential. With a drone, it is possible to carry out topographic surveys of the same quality as the highly accurate measurements collected by traditional methods, but in a fraction of time. This substantially reduces the cost of a site survey and the workload of specialists in the field. The data is collected to generate Topographical maps, Volumetric reports, Cadastral map overlays, Geo-referencing of village maps. Generate DSM & DTM.





DGPS Survey

- Static Ground Control Points (GCP).
- GCP by RTK mode
- Topographical Surveying
- Stakeout
- Volumetric

Forest Clearance Proposal

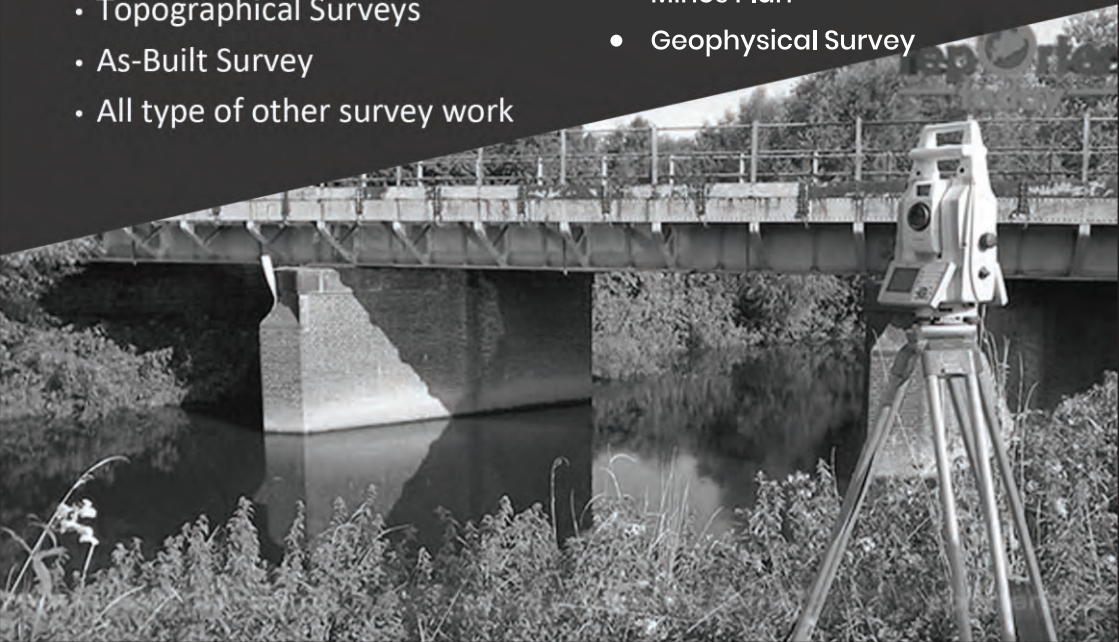
- DGPS Survey
- Digitization of Cadastral Map.
- Geo-Referencing of Village maps
- Geo-Referencing of Survey on India toposheet
- Land Schedule
- FRA
- Creation of all type of required file e.g- kml, shp, layout plan ect.

Total Station

- Traversing
- Road Survey
- Route Surveys
- Topographical Surveys
- As-Built Survey
- All type of other survey work

Mines & Geology

- Mines Survey
- Volumetric Analysis
- Geological Report
- Mines Plan
- Geophysical Survey





Our Equipment

- U.A.V (Drone) – DGCA approved drones with NPNT compliance.
- DGPS – Dual frequency
- Total Station
- Auto Level
- GPS
- A0 Size Scanner
- A0 Size Plotter
- High end computer & Laptops to process heavy drone data.



Licensed Software

- Agisoft Metashape - Photogrammetry
- BricsCAD - CAD
- E-Survey CADD - CAD volumetric
- Global Mapper - GIS
- Colortrac - Raster





Our Clients



JHARKHAND POLICE

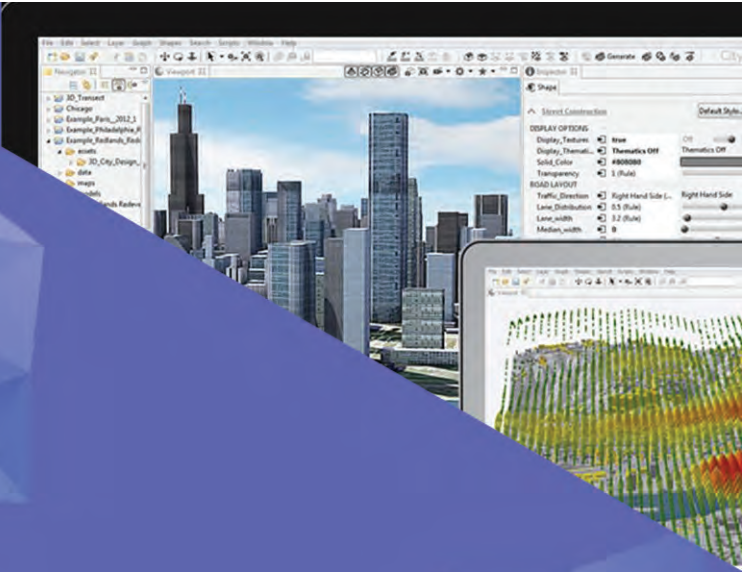


JMC Projects (India) Limited
A Kalpataru Group Enterprise



Our Clients





7979742878



8969341822



Corporate Office:
Near- Nehru Yuva Kendra
Giridih-Pachamba Road
Mohanpur
Dist: Giridih - Jharkhand - 815301



Branch Office:
Beside Dr. Zakir Hussain Urdu School
Bhandaridih



rayyangeotech@gmail.com



RAYAN GEO TECH

SURVEYING SOLUTION

GIRIDIH - JHARKHAND

<https://rgtsurvey.org>

Land Surveying Solution